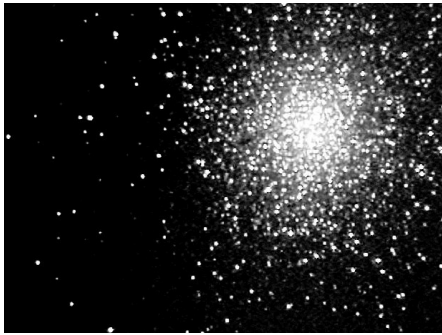


Mintron Phil Dyer (PD) Cameras **(EXTRACT ONLY)** INSTRUCTION MANUAL

Introduction

The Mintron PD cameras are small and light, yet are state-of-the-art professional-grade CCD Video Cameras that will provide real-time viewing of the whole range of deep sky, and other astronomical objects. These incredible video cameras are far more sensitive than most commercially available B&W CCD video cameras. This is all accomplished using an on-board video integration system (frame accumulation) that allows you to increase the sensitivity of the camera from the normal level up to 256X "normal."



This enhanced sensitivity allows you to view fainter deep sky objects including stars, star fields, star clusters, nebulae and brighter galaxies - in real time! The cameras can also be used to view comets and meteors in real time. When combined with a wide-angle video lens, you can image a wide angle of the sky to view meteor showers or transits of man-made satellites including the International Space Station. Also, the wide dynamic range of the camera allows you to image brighter objects such as the moon, planets and even the sun (with the proper solar filter) in real time.

The PD Camera package:

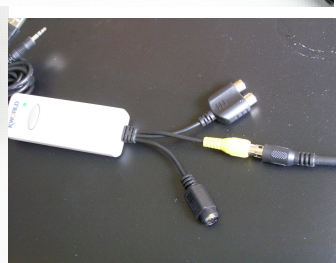
Mintron PD 2385C-EX Camera

Wide-angle lens 16mm f1.6

12V mains adapter

Cables and connectors for TV display

Adapter for PC Display and Capture



Mintron Phil Dyer (PD) Cameras

INSTRUCTION MANUAL

Contents

	page
Connections and initial Set-up	3
For display on a TV set	3
For Display and capture on a PC or Laptop	3
PC Display and Capture using Power Director software	4
Image Processing	5
On Screen Display (OSD) Camera Settings	6-7
Settings for deep sky observing	6
Settings for Bright object observing	7
Specifications	8

Connections and initial Set-up

To start with, use the Mintron camera with the small lens provided.

Then, connect the video cable, and power cable from the mains adapter, into the back of the Mintron camera as shown.



For display on a TV set

Connect the other end of the Video Cable to the "Video In" socket on the TV. If the TV has no such socket, then use the SCART adapter to connect to the TV's SCART input socket. Use the TV remote to change the TV channel to "AV". Plug in and switch on the mains adapter, and you're done.



Note: Old-style CRT TV screens give better results than some LCD screens.

For Display and capture on a PC or Laptop

Switch on your PC/Laptop and wait till it's fully booted up. Connect the video output from the Camera to the KWorld DVD Maker, and then plug the DVD maker into the USB port on your PC/Laptop.



Plug in the mains adapter and switch on. The green light on the back of the camera should light up.



If the windows "Welcome to the Found New Hardware Wizard" pops up, then cancel out of the screen.



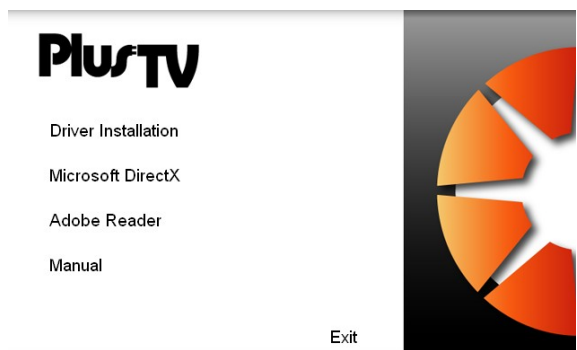
For the first time only, you will need to install the drivers and software:-

Insert the Kworld PlusTV Driver Installation CD-ROM into your PC's CD or DVD drive.

Select "Driver Installation", and follow the on-screen instructions.

Once Installation is complete, use the other CD_ROM to install the Power director 5 software.

Restart the computer, and you're done.



Full Manual available to purchasers of the PD 2385C-EX camera only

Full Manual available to purchasers of the PD 2385C-EX camera only

Full Manual available to purchasers of the PD 2385C-EX camera only

Full Manual available to purchasers of the PD 2385C-EX camera only